





MECHANICAL DESIGN



Full service Mechanical Design Professionals that can provide the full package!

We specialize in commercial and industrial mechanical system designs that are integral to the building systems and process functions.

- Mechanical Systems
- Air Conditioning Systems Design
- Ventilation Systems Design
- Heating Systems Design
- Load Calculations
- Demand Controlled Ventilation
- Parking Garage and Vehicle Maintenance Exhaust
- Clean Rooms – Site Built and Modular
- Central Chilled and Heating Water Plants
- Low and High Pressure Steam Systems
- Medium and High Temperature Heating Water Systems
- Process Flow and Piping Diagrams
- Energy Management and Control System (EMCS)
- Commercial Kitchen Hoods
- Energy Recovery
- Laboratory Fume Hoods
- Humidification and Dehumidification
- Refrigerated Warehousing
- Low and Medium Temp Walk In Coolers





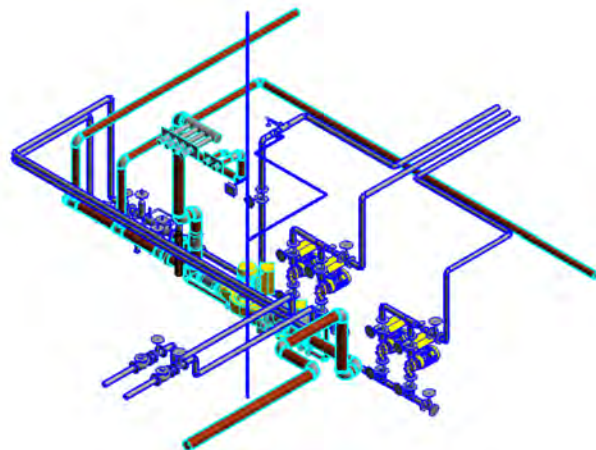
PLUMBING DESIGN



Plumbing Systems are a vital component in every building!

We design the waste, water, drainage, rainwater and gas systems to meet each building's individual demands. We understand water conservation and utilization aspects from small to large buildings.

- Domestic Water Supply and Distribution Systems
- Water Heaters and Domestic Boilers
- Solar Water Heating
- Site Sewer Lift Stations
- Grey Water Systems
- Rain Water Harvesting
- Chemical Piping
- Acid Neutralization
- Waste and Vent Systems
- Medical Gas Systems
- High Purity Water Systems
- Industrial Waste Systems
- Booster Pumping Stations
- Backflow Preventers
- Compressed Air Systems
- Emergency Fixtures
- Fuel Gas Piping Systems
- Kitchen Water and Waste Systems
- Compressed Natural Gas Systems
- Liquid Fueling Systems



COMMISSIONING

Strong quality assurance guarantee through accountability.

Commissioning is a quality-oriented process for verifying that a building's systems operate according to the Owner's Project Requirements. We are a commissioning agency, and our Commissioning Authorities (CxA's) are certified by the AABC Commissioning Group to provide an unbiased perspective of the building systems' installation and operation. We have experience commissioning all building systems including HVAC, electrical, fire suppression, fire alarm, special systems, and building envelope. The success of our commissioning program has been proven. Our firm is trusted and highly acclaimed for our commissioning work.

- Whole-Building Commissioning
- New Construction Commissioning
- Retro-Commissioning
- Re-Commissioning
- Continuous Commissioning
- Design Reviews
- LEED Fundamental and Enhanced Commissioning
- International Energy Conservation Code (IECC) Commissioning
- Integrated Fire Protection and Life Safety Commissioning
- U.S. Army Corps of Engineers Commissioning







TOWN OF

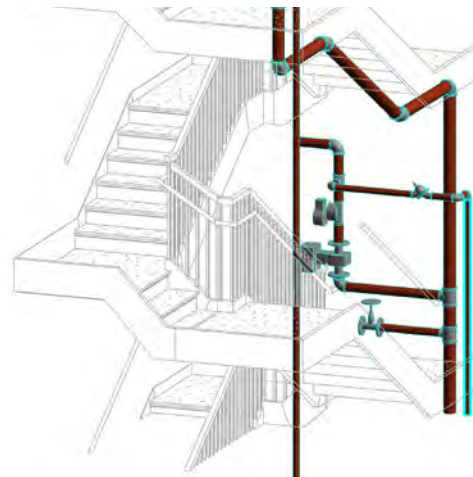
SAHUARITA

FIRE PROTECTION DESIGN

Fire Protection Engineering Design with Value Engineering and Real-World Installation in mind.

Our expertise in fire suppression, fire detection, and smoke control systems keeps people and property safe.

- Fire Protection and Life Safety Engineering
- Wet-Pipe Systems
- Passive Fire Protection and Fire-Resistive Construction
- Fire Alarm and Mass Notification Systems
- Fire Suppression Systems
- Hazard and Code Analysis
- Standpipe Systems
- Pre-Action and Dry Pipe Systems
- Clean Agent Systems
- ESFR Systems
- Water Storage Tanks
- Antifreeze Systems
- Explosion Protection
- Fire Pumps and Pump Control Systems
- Low and High Expansion Foam Systems
- Smoke Control Systems

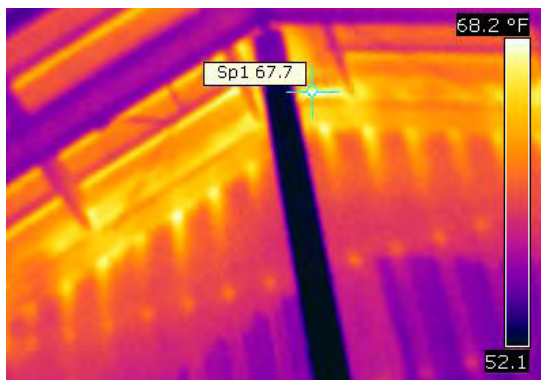
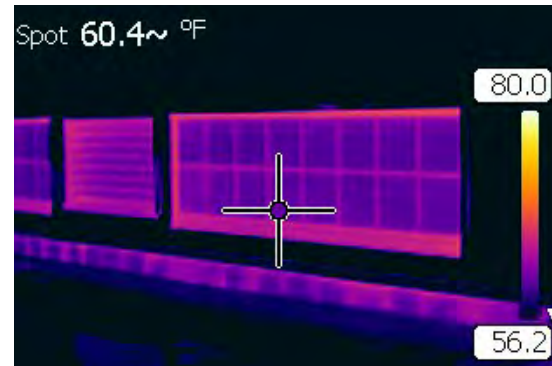
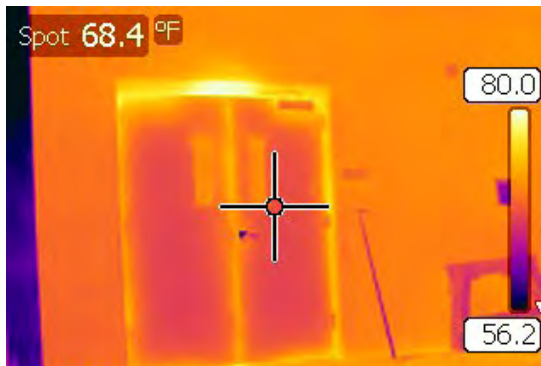


ENERGY ASSESSMENT AND ENERGY MODELING

Existing Building Optimization at its best!

We perform energy assessments and energy modeling to find an efficient, cost effective, and environmentally responsible solution for existing buildings. Our engineers, led by a Certified Energy Manager (CEM), use computer-simulated energy modeling to estimate energy savings and perform carbon footprint analysis. After the energy assessment is complete, we use our expertise as design engineers to help the building owner implement the recommended energy conservation measures.

- ASHRAE Level I, II, and III Energy Assessments
- Investment Grade Audits
- Whole-Building Energy Modeling
- LEED EAc1 Documentation
- Life Cycle Cost Analysis
- Sustainability Analysis
- Due Diligence Report
- Carbon Footprint Analysis



REVIT & BIM

Building Information Modeling (BIM) at our fingertips with the necessary tools to get your project done with improved coordination between building systems.

By using BIM software we are able to communicate our design intent and collaborate with the project design and construction teams more effectively. BIM software generates an intelligent 3-D model that can be manipulated during the design process to instantly coordinate with other disciplines and generate stunning 3-D images and construction documents. This software also enables our clients and owners to visualize what the finished product will look like before construction is even started.

- AutoCAD Design Suite
- Revit MEP
- Creates an Intelligent 3D Design Model of the MEP Systems Coordination of a Building
- Helps Make Critical Cost and Timesaving Decisions During the Design Phase
- Produces Higher Quality Work by Assisting in Spotting Potential Problems During the Design Process
- Identify Key Challenges and Reduces the Amount of RFI's During Construction
- Facilitates Coordination and Visualizes Design Intent
- Information is Coordinated and Consistent
- Creates Efficiencies Throughout the Project Lifecycle
- Collaborate and Communicate with Entire Project Team



ADAMS AND ASSOCIATES ENGINEERS, PLLC

Contact Us Today!!

info@adamsengrs.com

www.adamsengrs.com

Tucson Office

6422 E. Speedway Blvd., Ste. 130
Tucson, Arizona 85710
520-325-3858

Tempe Office

1615 W. University Dr., Ste. 131
Tempe, Arizona 85281
480-406-6787

WHAT MAKES US DIFFERENT?

Our communication is clear and responsive, our documents are technically sound, and we are ready to perform above and beyond our clients' expectations.

ADAMS
AND ASSOCIATES ENGINEERS, PLLC

MECHANICAL AND FIRE PROTECTION ENGINEERS